



# GAT MONTHLY MEMBERSHIP PROGRESS REPORT

Results as of: 5/31/2023

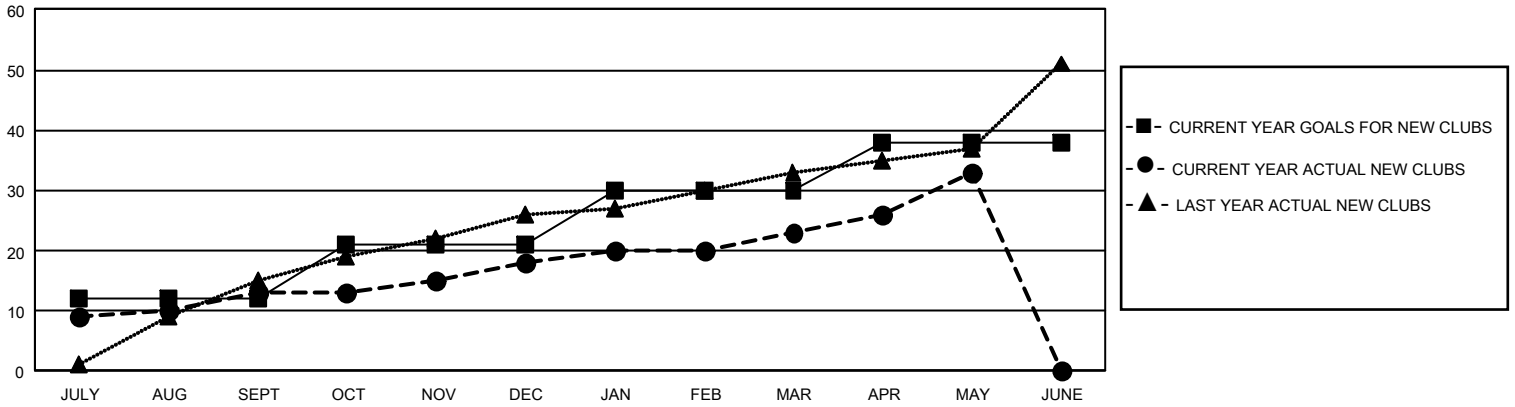
## GMT Constitutional Area 8, Group B

REPORT DOES NOT INCLUDE CLUBS IN UNDISTRICTED AREAS.

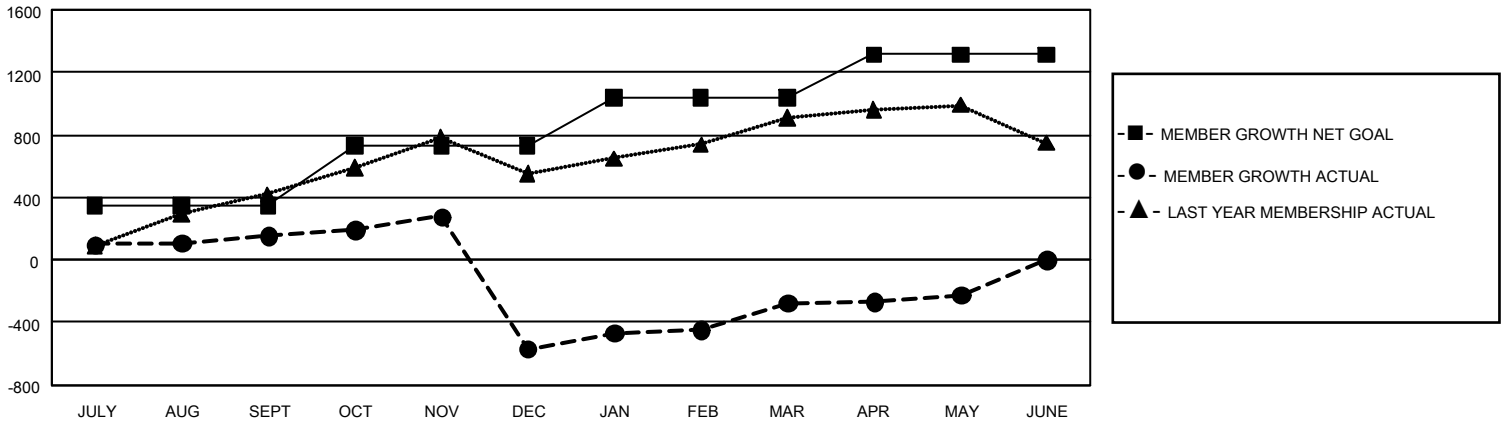
Clubs			
RESULTS FOR 2022-2023			
QUARTER	NEW CLUB GOAL	NEW CLUBS	DROPPED CLUBS
JULY/AUG/SEPT	36	13	8
OCT/NOV/DEC	27	5	30
JAN/FEB/MAR	27	5	3
APR/MAY/JUNE	24	10	2

Members			
RESULTS FOR 2022-2023			
QUARTER	MEMBER GROWTH NET GOAL	MEMBER GROWTH ACTUAL	DROPPED MEMBERS ACTUAL (including transfers)
JULY/AUG/SEPT	350	546	355
OCT/NOV/DEC	380	689	1,353
JAN/FEB/MAR	305	612	226
APR/MAY/JUNE	278	484	375

GOALS AND ACTUAL NEW CLUBS CUMULATIVE



GOALS AND ACTUAL MEMBERS CUMULATIVE



<b>DROPPED CLUBS: 42</b>	325 CLUBS OF 470 ADDED 1 OR MORE NEW MEMBERS	<b>GENDER DISTRIBUTION</b>	
		MALE 6,341 (58.36%)	FEMALE 4,522 (41.62%)
<b>DROPPED MEMBERS</b>		NON BINARY 0 (0.00%)	PREFER NOT TO ANSWER 3 (0.03%)
DECEASED 29	<a href="#">CLICK HERE FOR CUMULATIVE MEMBERSHIP DATA</a>	TOTAL FAMILY UNIT MEMBERS 868	
CLUB CANCELLED 668		FAMILY MEMBERS PAYING HALF DUES 495	
OTHER 1,614			
<b>TOTAL 2,311</b>			